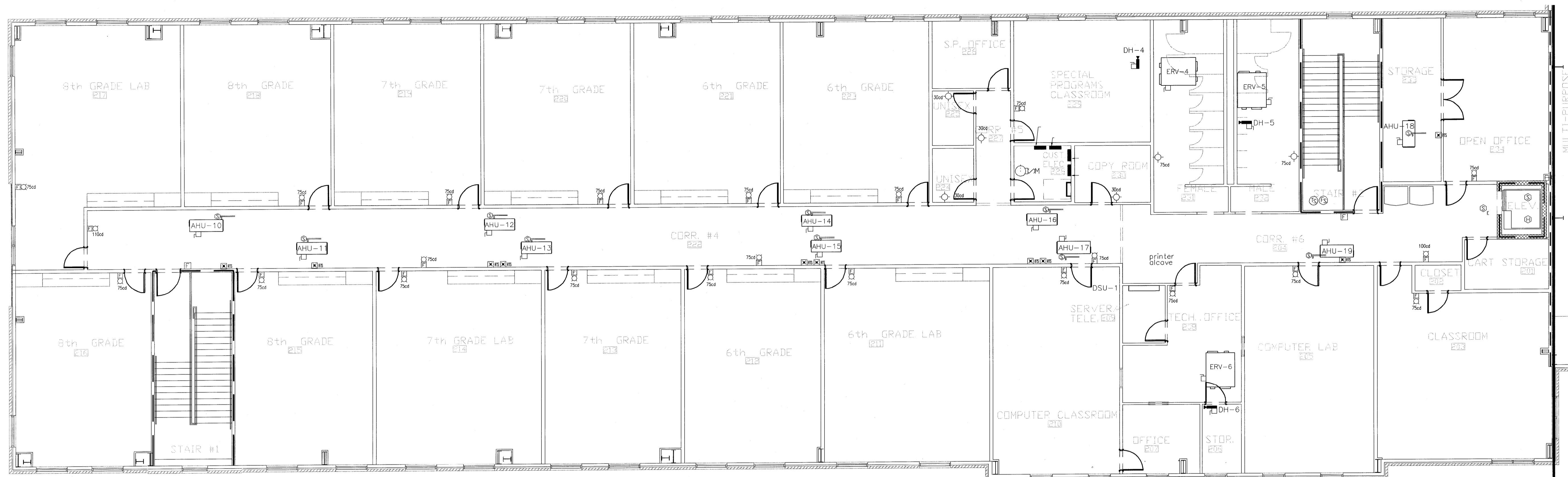


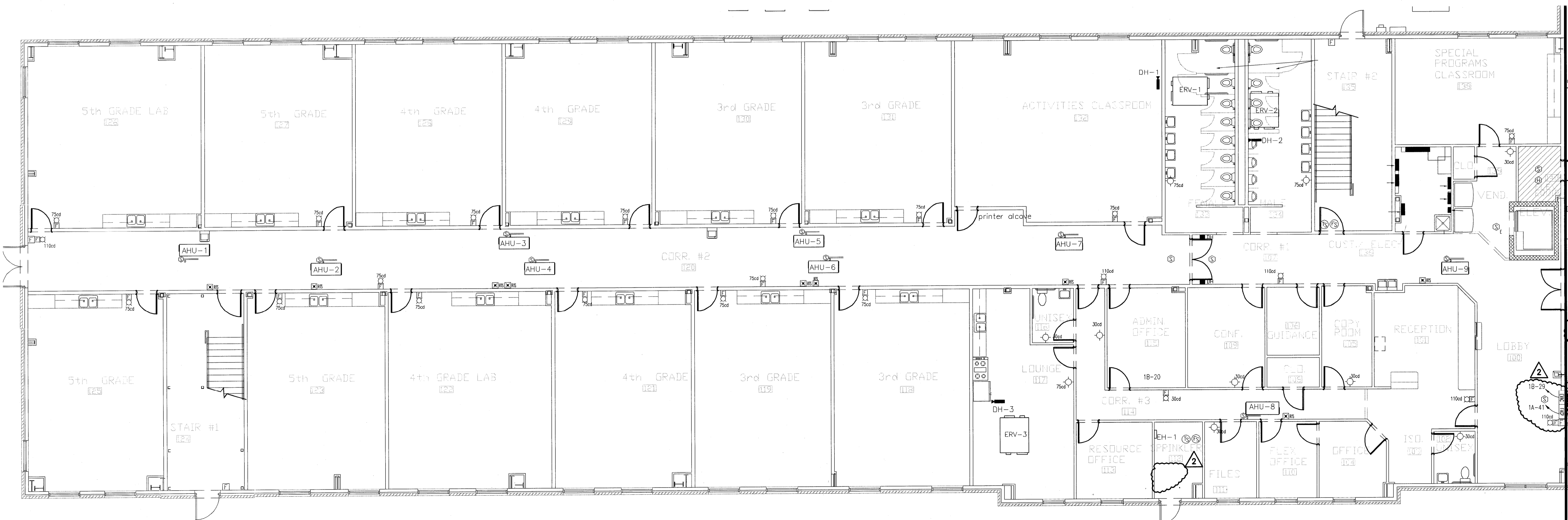
RATED WALL LEGEND

- 1 HOUR FIRE BARRIER - UL #905
- 1 HOUR FIRE BARRIER - UL #419

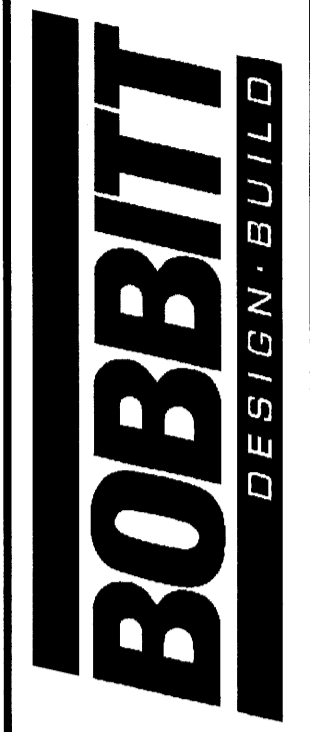
REVISIONS			
No.	DATE	DESCRIPTION	REV. BY
▲	9/21/06	CODE COMMENTS	WCM
▲	10/26/06	OCCUPANCY REVISIONS	WCM
▲			
▲			



2 2ND FLOOR FIRE ALARM PLAN
FA1 1/8" = 1'-0"



1 1ST FLOOR FIRE ALARM PLAN
FA1 1/8" = 1'-0"



Stantec Consulting Inc.
801 Jones Franklin Rd.
Suite 300
Raleigh, NC 27606
Tel. 919.851.6865
Fax. 919.851.7024
www.stantec.com

Copyright Reserved
The Contractor shall verify and be responsible for all dimensions. DO NOT scale the drawing - any errors or omissions shall be reported to Stantec Consulting Inc. without delay. The Copyrights to all designs and drawings are the property of Stantec Consulting Inc. Reproduction or use for any purpose other than that authorized by Stantec Consulting Inc. is forbidden.

DRAWN BY: WCM

CHK BY: MTP

THE MAGELLAN CHARTER SCHOOL
9324 BAILEY WICK ROAD
RALEIGH, NORTH CAROLINA

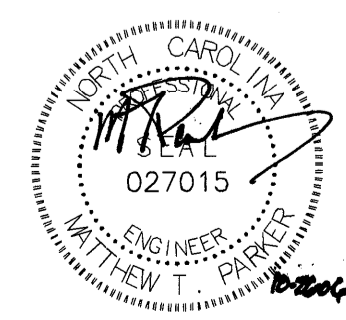
24 X 36
AS NOTED

09/12/06

1998-0083

1ST & 2ND FLOOR
FIRE ALARM PLAN

FA1
1 OF 2



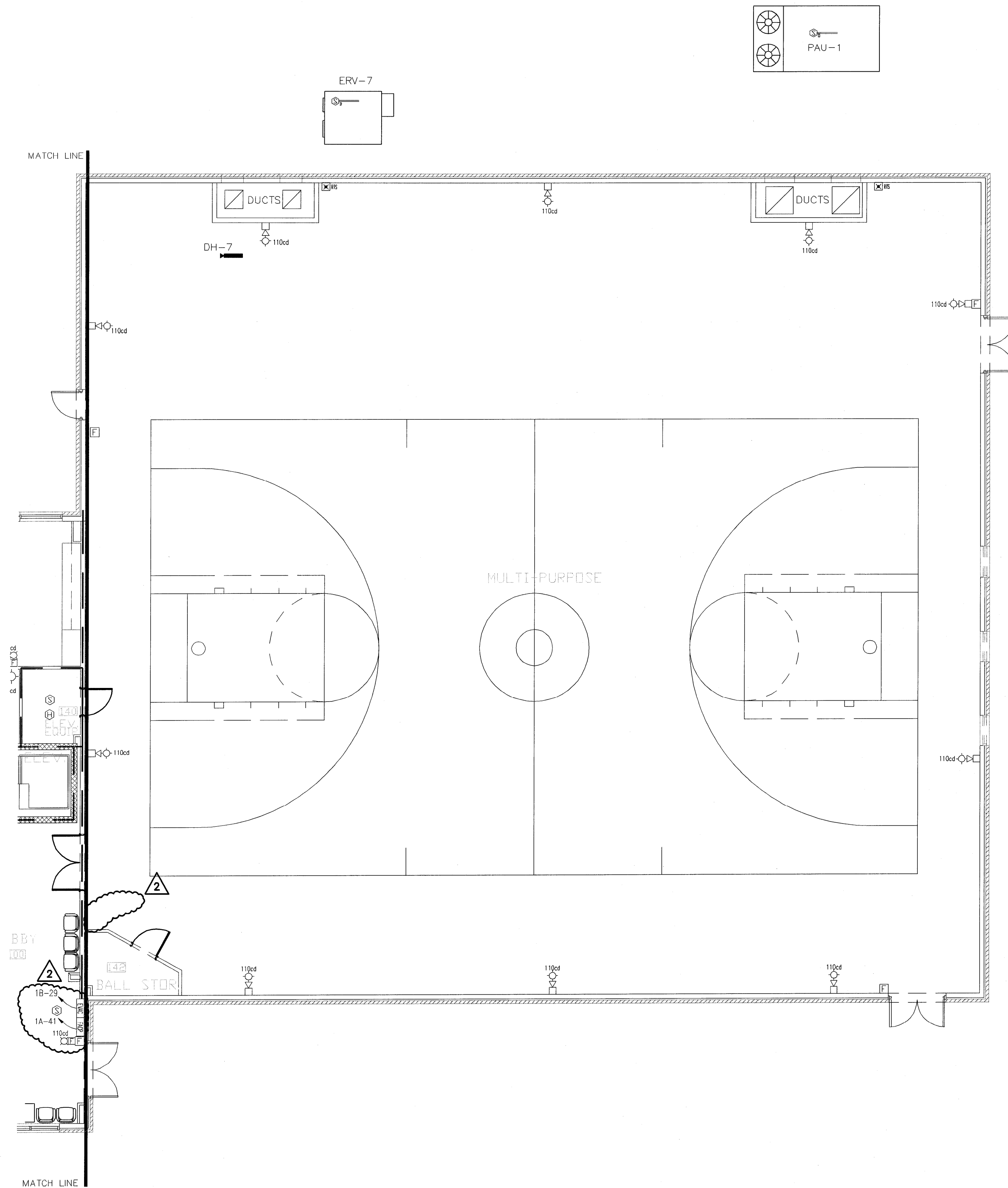
10/26/06 3:31 PM I:\027015\1\SHARED_PROJECTS\7060909\MAGELLAN CHARTER SCHOOL\SET\1ST AND 2ND FLOOR FIRE ALARM PLAN.rvt

COPYRIGHT © 2006 BOBBITT DESIGN-BUILD, INC. ALL RIGHTS RESERVED.

Bobbitt Design Build, Inc.
600 Germantown Road
Raleigh, NC 27607
(919) 851-9800
Fax (919) 851-9822
design@bobbitt.com
www.bobbitt.com

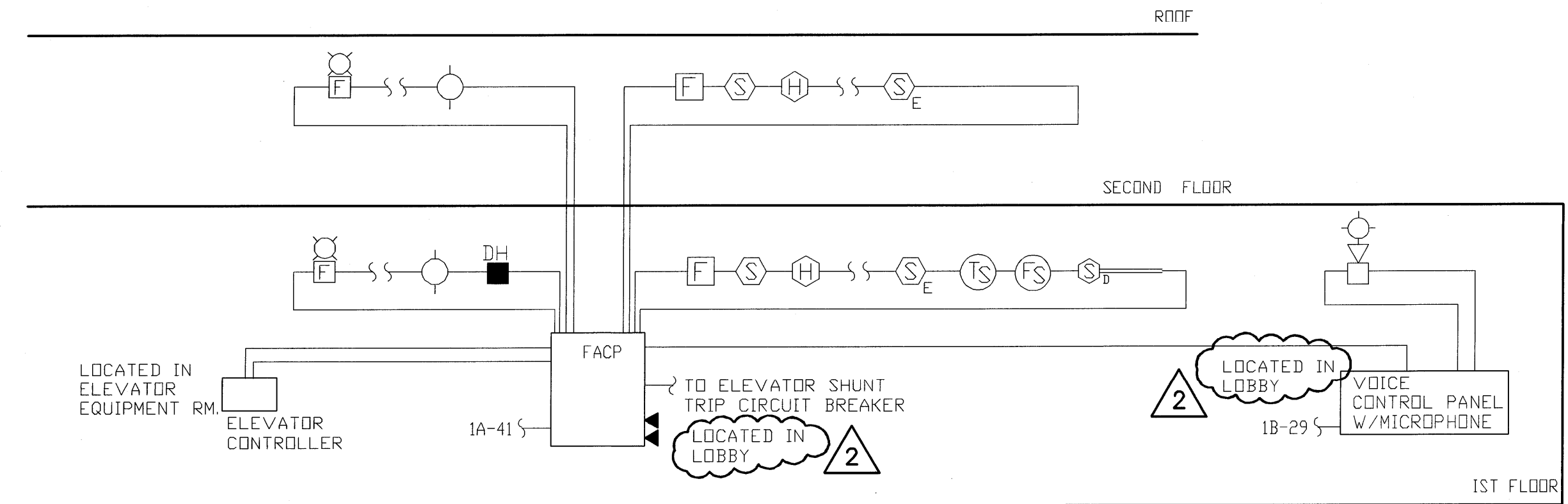
RATED WALL LEGEND

- 1 HOUR FIRE BARRIER - UL #905
- 1 HOUR FIRE BARRIER - UL #419



1 GYM FIRE ALARM PLAN
FA2 1/8" = 1'-0"

REVISIONS			
No.	DATE	DESCRIPTION	REV. BY
1	9/21/06	CODE COMMENTS	WCM
2	10/26/06	OCCUPANCY REVISIONS	WCM



2 FIRE ALARM RISER DIAGRAM
FA2 NTS

GENERAL NOTES

- FIRE ALARM SYSTEM SHALL BE A SIMPLEX 4010 SERIES, ADDRESSABLE, 24V DC, POWER LIMITED, FULLY SUPERVISED, WITH 24 HOUR STANDBY BATTERY. PANEL TO BE SURFACE MOUNTED. THE FIRE ALARM SYSTEM SHALL BE LISTED AND LABELED BY AN INDEPENDENT TESTING LABORATORY, AND ALL COMPONENTS SHALL BE LISTED FOR USE AND COMPATIBLE WITH THE SELECTED FIRE ALARM CONTROL PANEL.
- FIRE ALARM DEVICES ARE TO BE INSTALLED IN ACCORDANCE WITH NFPA 72 AND 'ADA'.
- ALL FIRE ALARM WIRING SHALL BE IN CONDUIT.
- DEVICE QUANTITIES SHALL BE AS INDICATED ON THE PLANS. VERIFY QUANTITY AND EXACT LOCATION WITH AUTHORITY HAVING JURISDICTION.
- THE DAC SHALL REQUIRE TWO PHONE LINES.
- FIRE ALARM VOICE EVACUATION CONTROL PANEL SHALL BE A SIMPLEX 4003 SERIES, 24V DC, POWER LIMITED, FULLY SUPERVISED, WITH 24 HOUR STANDBY BATTERY. PANEL SHALL PROVIDE PRE-RECORDED MESSAGES AND MANUAL CONTROL FOR MICROPHONE ANNOUNCEMENTS. PANEL TO BE SURFACE MOUNTED. THE FIRE ALARM SYSTEM SHALL BE LISTED AND LABELED BY AN INDEPENDENT TESTING LABORATORY, AND ALL COMPONENTS SHALL BE LISTED FOR USE AND COMPATIBLE WITH THE SELECTED FIRE ALARM CONTROL PANEL.
- PROVIDE SPEAKER/VISUAL NOTIFICATION DEVICE SIMPLEX #4906-915 WITH WIRE GUARD SIMPLEX #4905-9998 WHERE INDICATED ON PLANS.

LEGEND:

- S SMOKE DETECTOR, CEILING OR WALL MTD. 'E' INDICATES ELEVATOR RECALL.
- H HEAT DETECTOR, CEILING OR WALL MTD.
- D DUCT DETECTOR
- F WALL MTD FIRE ALARM PULL STATION
- L FIRE ALARM STROBE LIGHT
- A ALARM AUDIO/VISUAL DEVICE
- V ALARM SPEAKER/VISUAL DEVICE
- DH DOOR HOLDER
- TS TAMPER SWITCH
- FS FLOW SWITCH

FIRE ALARM SYSTEM SCHEDULE

DEVICE TYPE	ACTION
PULL STATIONS	1
SMOKE DETECTORS	1
DUCT DETECTORS	1
TAMPER SWITCH	1
FLOW SWITCH	1
1ST FLOOR ELEVATOR LOBBY SMOKE DETECTOR	1,4
2ND FLOOR ELEVATOR LOBBY SMOKE DETECTOR	1,3
ELEVATOR MACHINE ROOM SMOKE DETECTOR	1,3
ELEVATOR MACHINE ROOM HEAT DETECTOR	1,3,5
ELEVATOR HOISTWAY SMOKE DETECTOR	1,3
ELEVATOR HOISTWAY HEAT DETECTOR	1,3,5
ANY DEVICE TROUBLE	2

ACTION NOTES

- ALARM INPUT SHALL ACTIVATE AUDIBLE/VISUAL SIGNALS IN THE BUILDING, ACTIVATE PRE-RECORDED MESSAGE IN THE GYM, RELEASE DOOR HOLDERS AND RESPECTED AIR HANDLERS WILL SHUT DOWN. AN ALARM INPUT SHALL CAUSE APPROPRIATE RESPONSE OF CONTROLLED FUNCTIONS, AND REPORT TO CENTRAL MONITORING STATION. MONITORING STATION REQUIREMENTS SHALL BE COORDINATED WITH OWNER AS REQUIRED.
- TROUBLE SHALL BE REPORTED TO CENTRAL MONITORING STATION AND AN AUDIBLE TONE SHALL SOUND AT THE FIRE ALARM CONTROL PANEL AND THE REMOTE ANNUCIATOR.
- ELEVATOR SHALL RECALL AND STOP ON THE 1ST FLOOR.
- ELEVATOR SHALL RECALL AND STOP ON THE 2ND FLOOR.
- ALARM INPUT SHALL OPERATE THE SHUNT TRIP CIRCUIT BREAKER FOR THE ELEVATOR MAIN LINE IN ACCORDANCE WITH THE ELEVATOR SAFETY CODE.

BOBBITT DESIGN-BUILD

Bobbit Design Build, Inc.
600 Germantown Road
Raleigh, NC 27607
(919) 851-1980
Fax (919) 851-1982
design@bobbit.com
www.bobbit.com

Stantec

Stantec Consulting Inc.
801 Jones Franklin Rd.
Suite 300
Raleigh, NC 27606
Tel. 919.851.6666
Fax. 919.851.7024
www.stantec.com

Copyright Reserved
The Contractor shall verify and be responsible for all dimensions. DO NOT scale the drawing - any errors or omissions shall be reported to Stantec Consulting Inc. without delay. The Copyrights to all designs and drawings are the property of Stantec Consulting Inc. Reproduction or use for any purpose other than that authorized by Stantec Consulting Inc. is forbidden.

DRAWN BY:
WCM

CHK BY:
MTP

THE MAGELLAN CHARTER SCHOOL
9324 BAILEY WICK ROAD
RALEIGH, NORTH CAROLINA

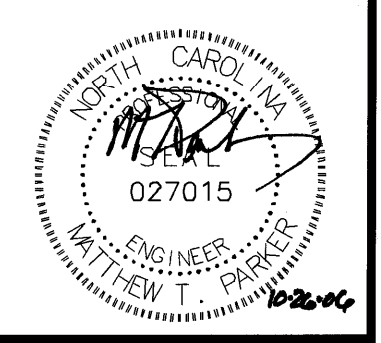
24 X 36
AS NOTED

09/12/06

1998-0083

GYM FIRE ALARM
PLAN AND DETAIL

FA2
2 OF 2



10/26/2006 3:28 PM I:\02\06\01\SHARED PROJECTS\170623\MAGELLAN CHARTER SCHOOL\USE\9324 DYM FIRE ALARM PLAN AND DETAILS.DWG

First Floor with Gym

